



Talent **MATCH**

Talent MATCH is a collaboration between:



Association for
Co-operative Education and
Work-Integrated Learning BC/Yukon



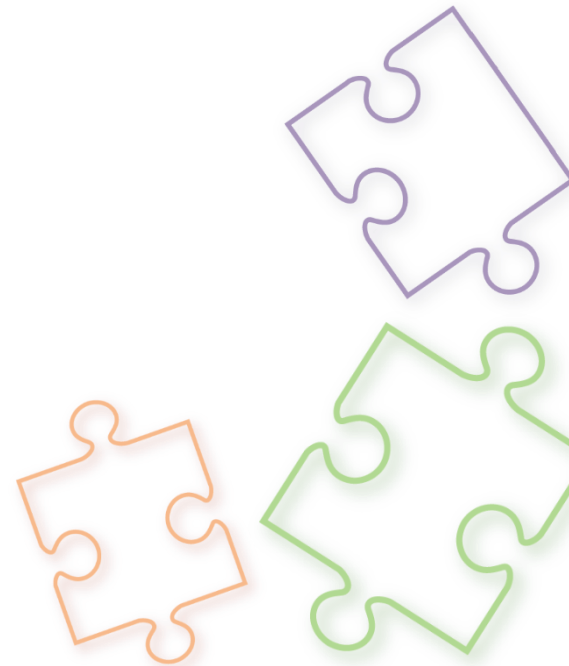
BC ALLIANCE FOR
ARTS + CULTURE



BC MUSEUMS
ASSOCIATION



The resource for people in Tourism





Talent **MATCH**

Talent **MATCH** supports:

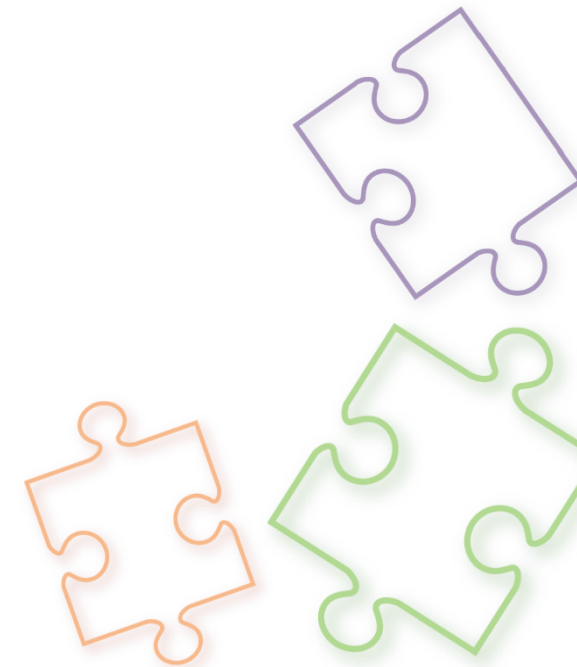
Museums

Arts

Tourism

Culture

Hospitality

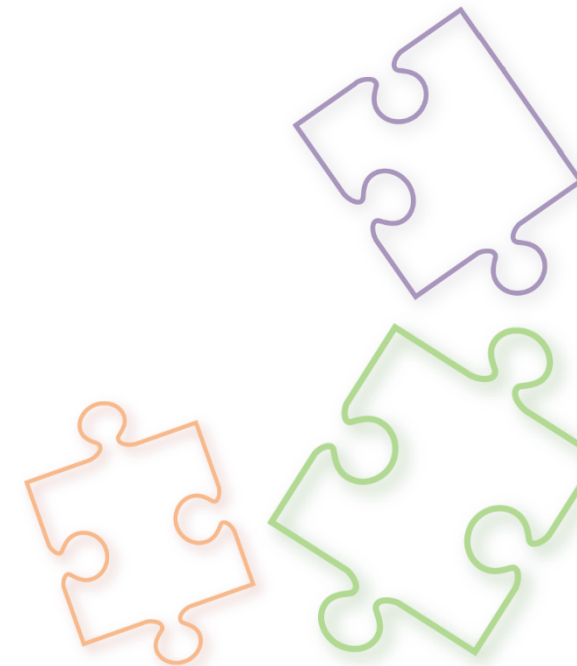




Talent **MATCH**

Talent MATCH Provides:

- Resources at acewilbc.ca/talent-match:
 - Funding information
 - Help connecting to post-secondary institutions
 - And finding the programs that suit your projects
 - Tips on how to recruit and onboard students
 - More HR tips & best practices
- One-on-one support
 - Contact TalentMatch@acewilbc.ca





Mitacs

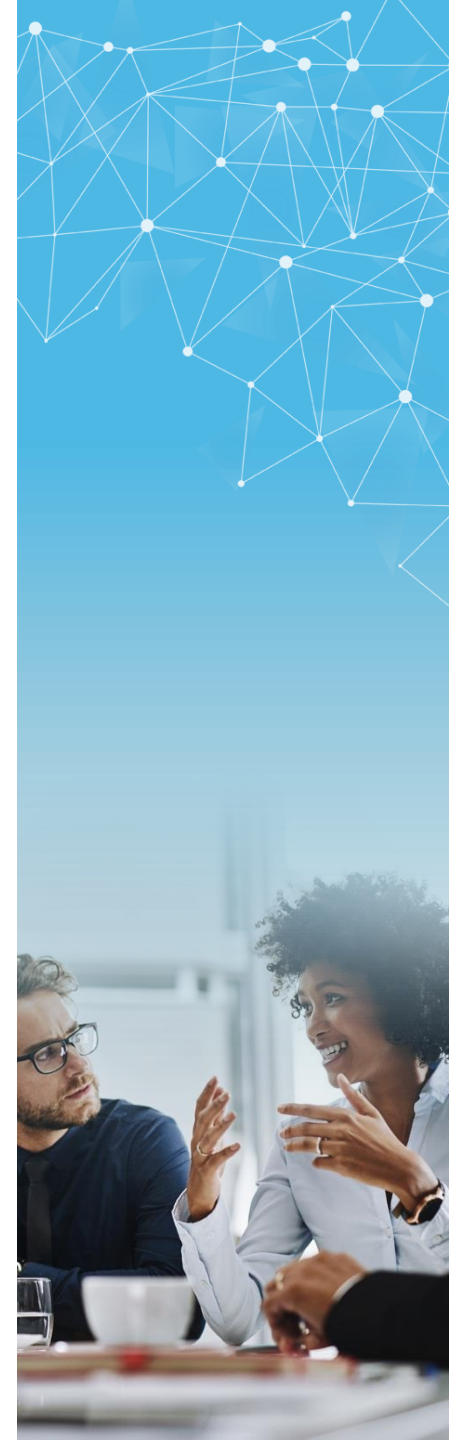
Mike Kennefick, PhD

*National Lead – Rural development
Business Development Specialist*

Mitacs supporting collaborative research



Mitacs is a national, independent, not-for-profit organization that fosters growth and innovation.

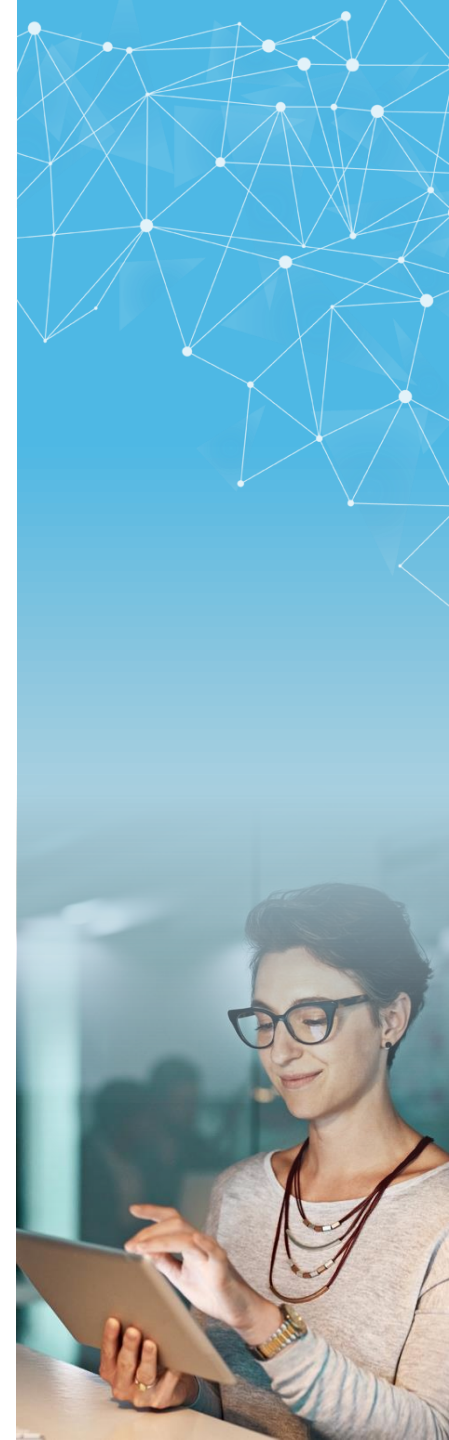


Mitacs supporting collaborative research



Our aim is to develop the next generation of researchers and innovators for Canada's knowledge- and innovation-based economy.

We bring together industry, not-for-profit organizations, community groups and post-secondary institutions to develop projects which solve business and societal challenges, while advancing academic research goals.



Mitacs has the experience

Mitacs is an independent,
not-for-profit organization that
fosters global growth and innovation

21 years in operation

117

post-secondary partners
in Canada

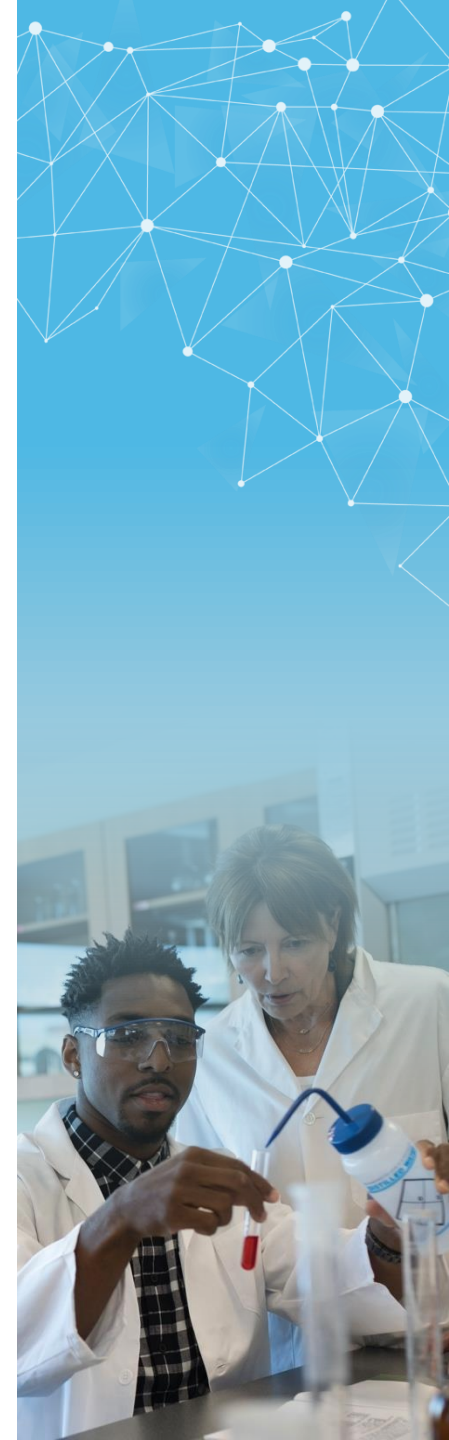
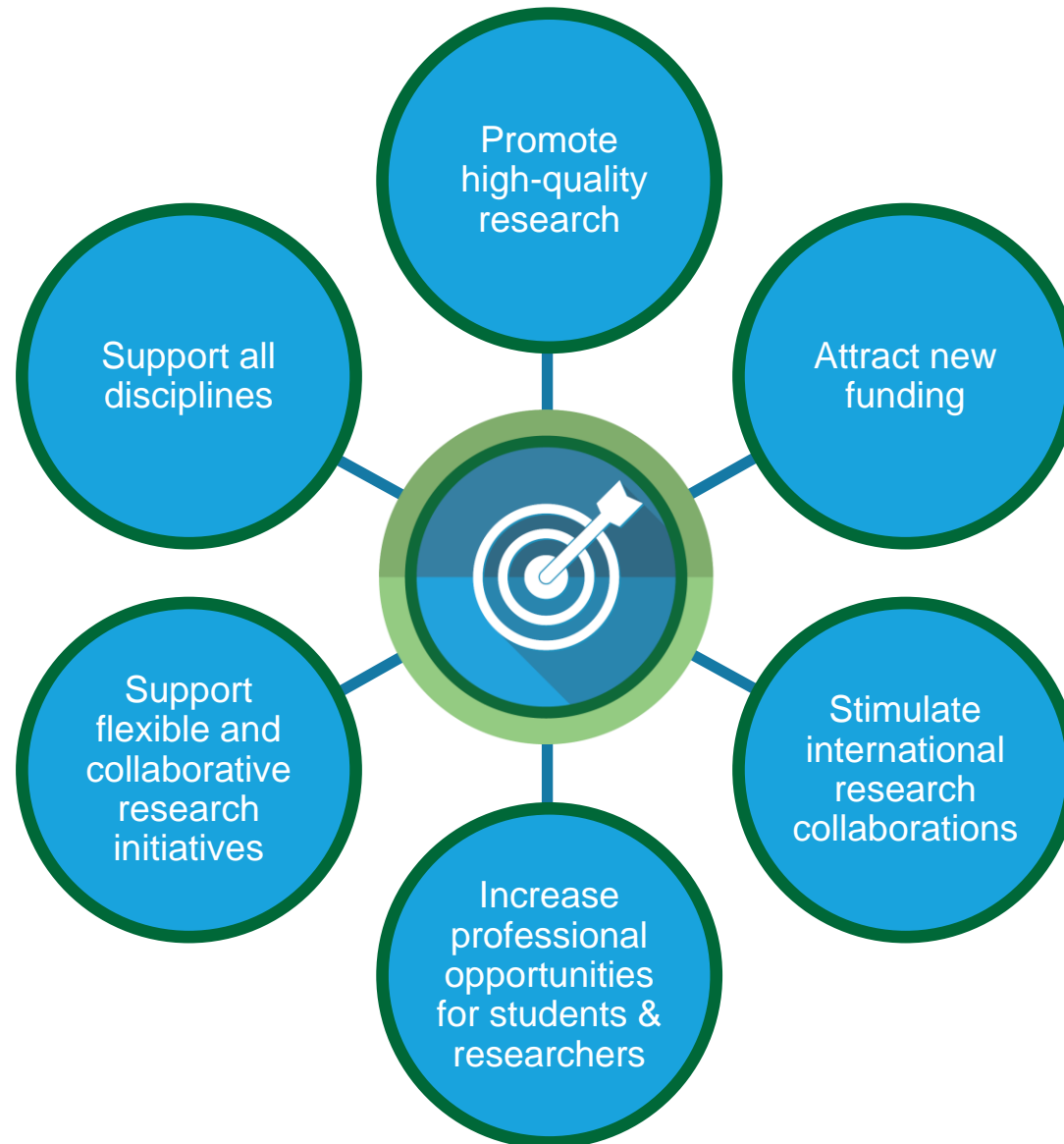
6,000+

company partners

200+ staff, **30+** offices, **4** regional hubs:
Vancouver | Toronto | Montréal | Ottawa



Our program objectives



Our programs

ACCELERATE

.....

National research
collaborations

BSI 2.0

.....

Strategic innovation
projects



Accelerate

Mitacs

Mitacs Accelerate

Basic and applied research collaborations between academia & for-profit or not-for-profit* organizations

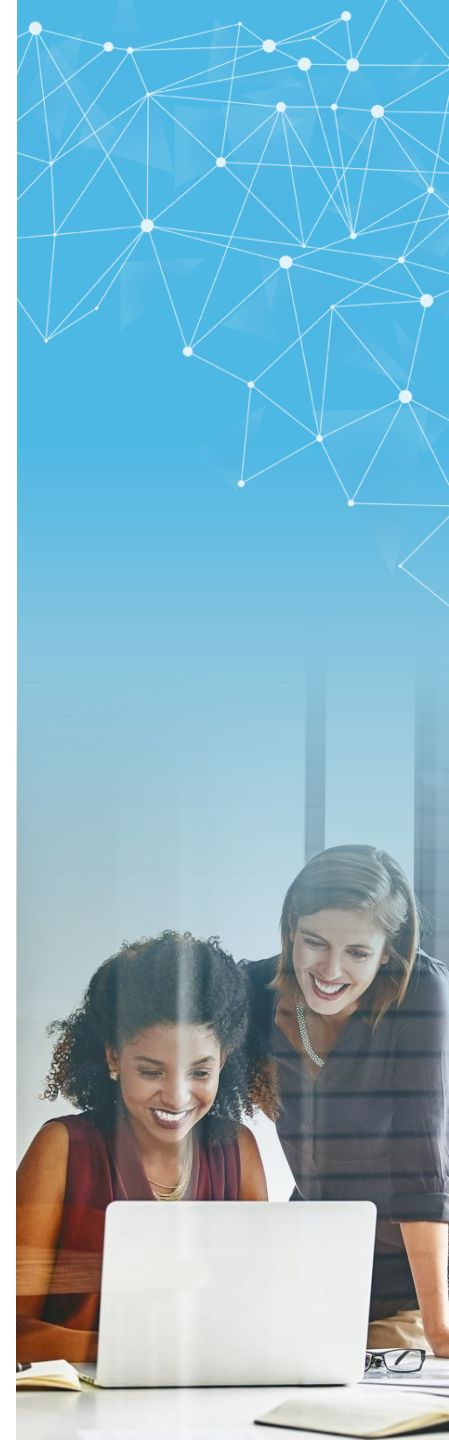
- (1) *Academic partner : Professor to supervise the project at an academic institution*
- (2) *Industry partner : For-profit or not-for-profit* organizations as a research partner*
- (3) *Intern : Any full-time/part time registered student to conduct the research*

Participation of undergraduate and graduate students, as well as postdocs in internship modules of **4 to 6 months**

Open to **all** academic disciplines



No competition: Applications are accepted **any time**



Mitacs Accelerate

More than
14,000
internship modules
to be submitted in
2021/2022

Small- and large-scale
multidisciplinary projects

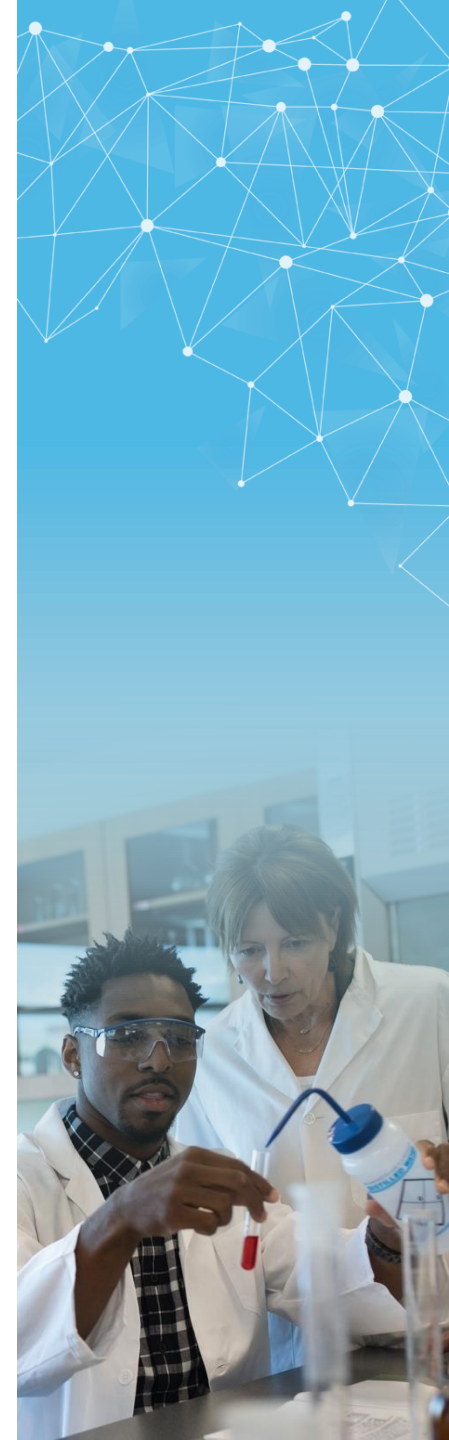
Funding from
\$15,000 to multi-million \$

Over 95%
application
success rate

Quick, simple
application process

Decision within
6–8 weeks

Both domestic and
international
students and
postdoctoral fellows
are **eligible**



Mitacs Accelerate — strategic partners



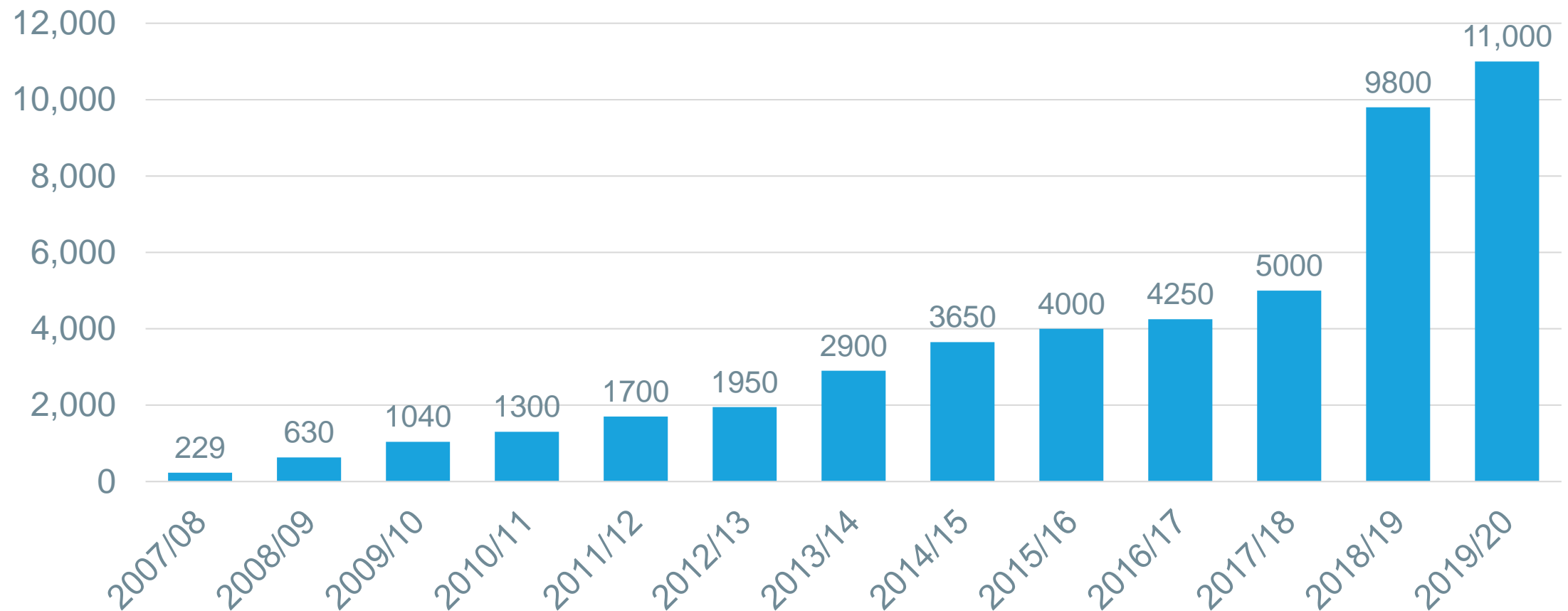
While Accelerate is a standalone funding program, it can be used in conjunction with certain other partnership programs.

In such cases, it means your Mitacs grant goes straight to the stipend or other research expenses and does not impact or detract from your other funding.

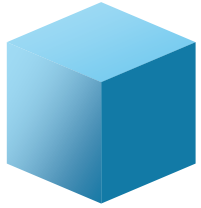


Building research collaborations—Accelerate

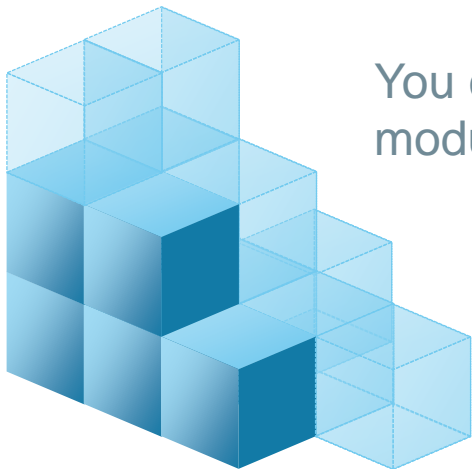
Accelerate internship modules submitted by fiscal year



Core structure



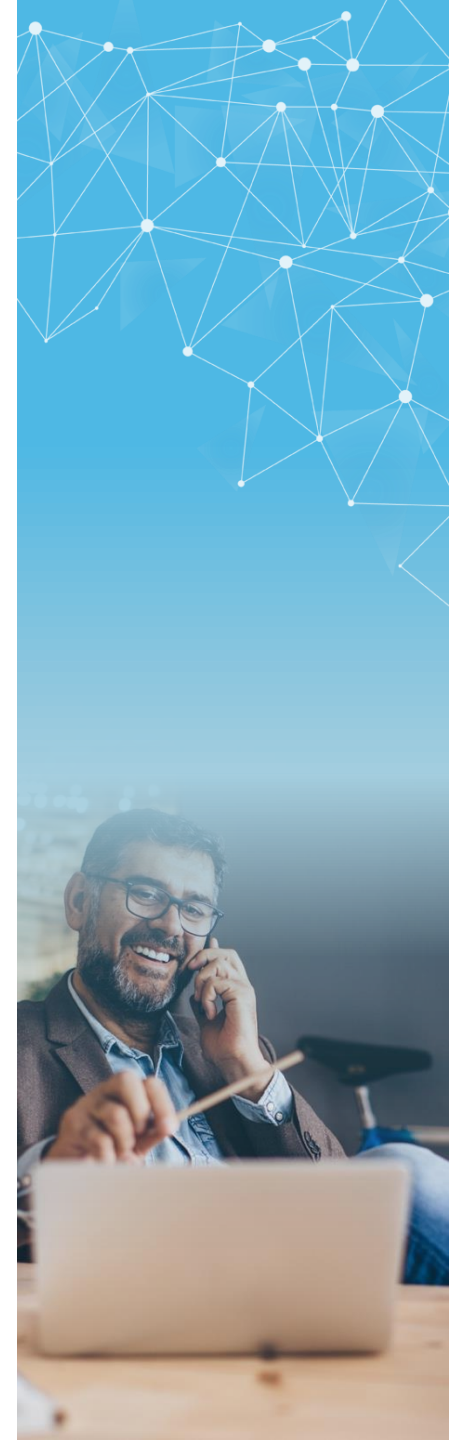
An intern spends a minimum of 4-to-6 months — or **one module** — on a project.



You can have as many modules as you need.



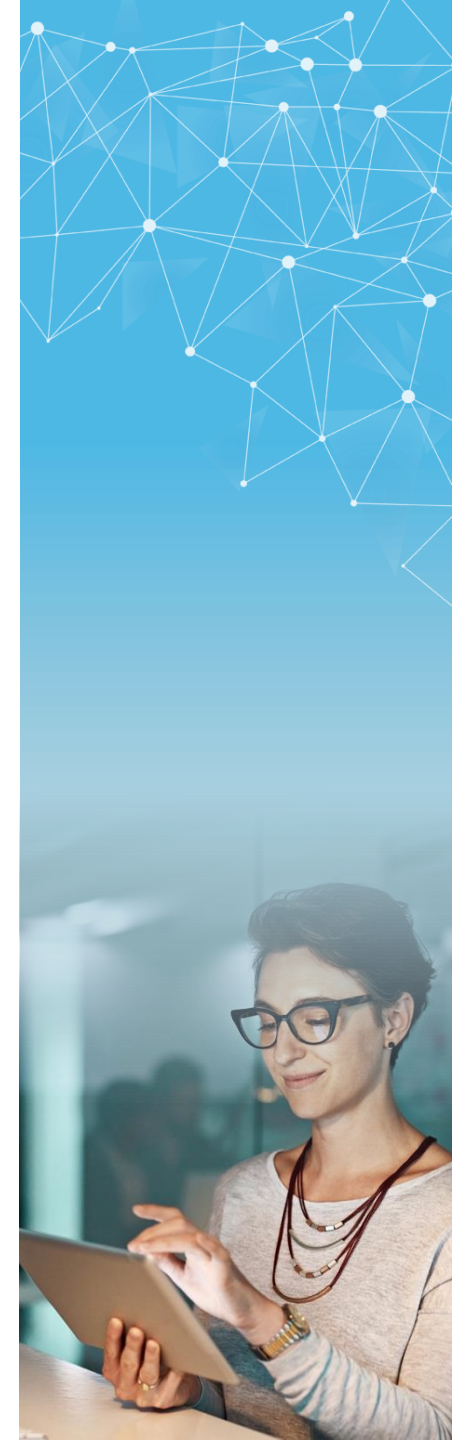
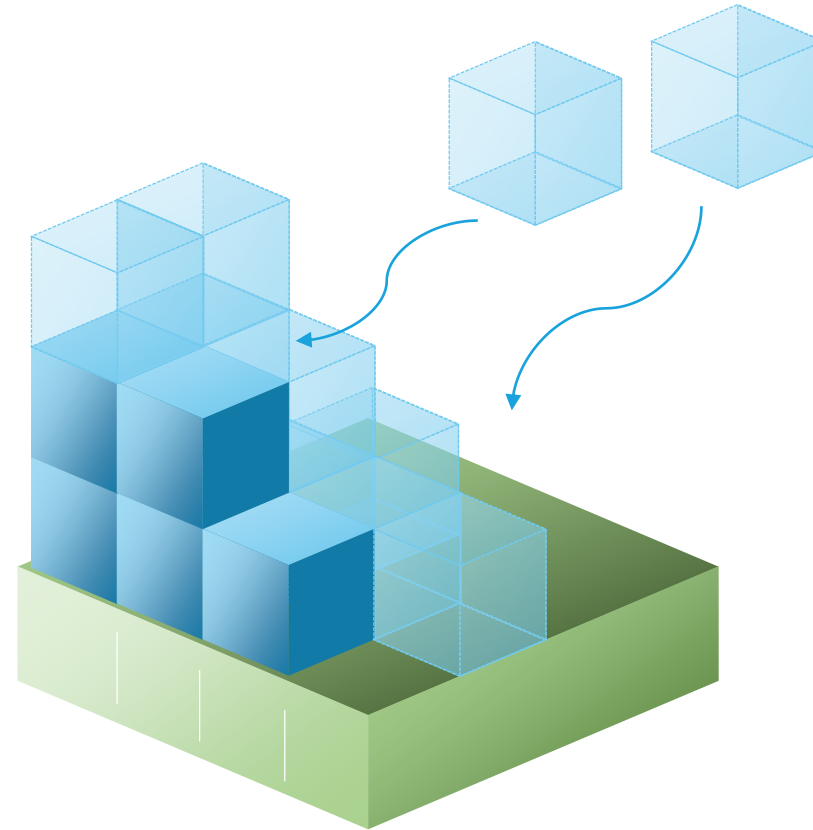
The intern spends a minimum of **25% of their time** at each site (post-secondary institution & partner organization)



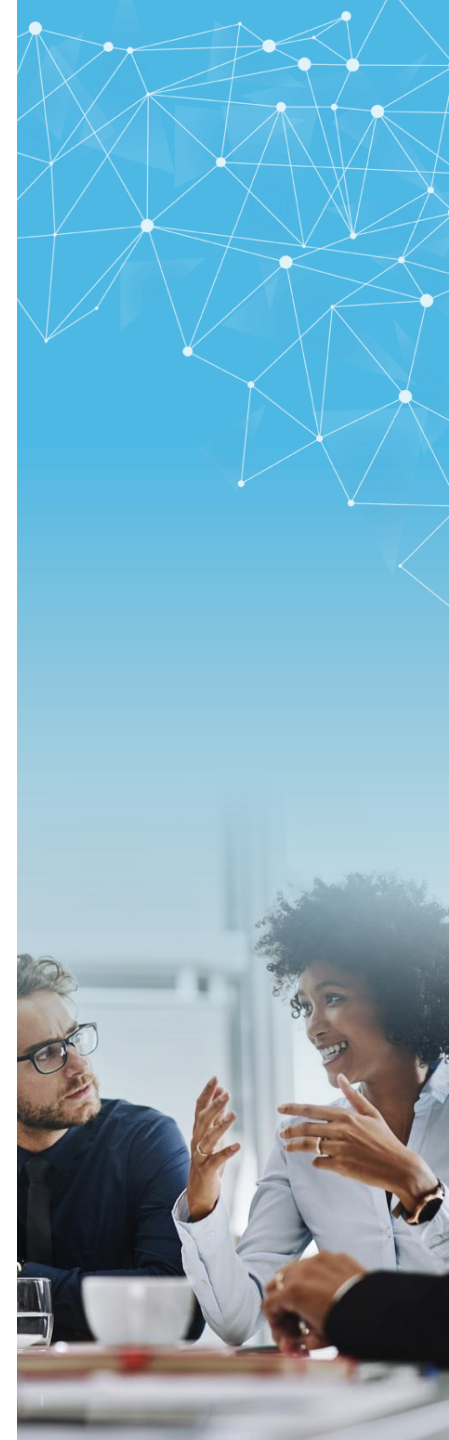
Mitacs Accelerate

Researchers can have multiple 4- to 6-month modules with students

- Undergraduates up to **3 modules** (over a 12-18 month period)
- Masters up to **4 modules** (over a 16–24 month period)
- Doctoral up to **8 modules** (over a 32–48 month period)
- Postdocs up to **9 modules** (over a 36 month period)

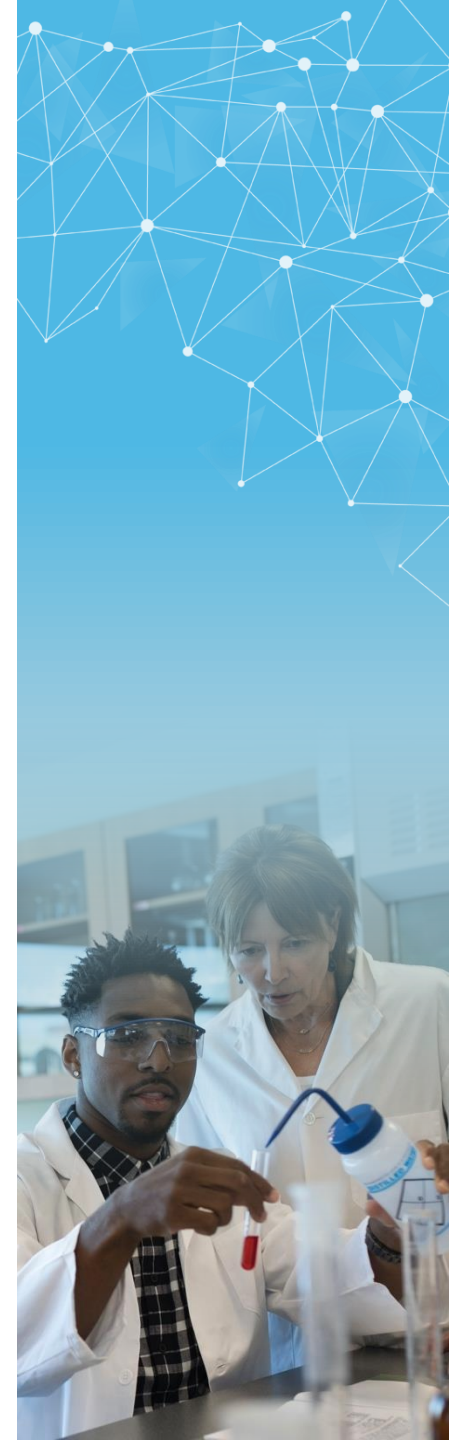
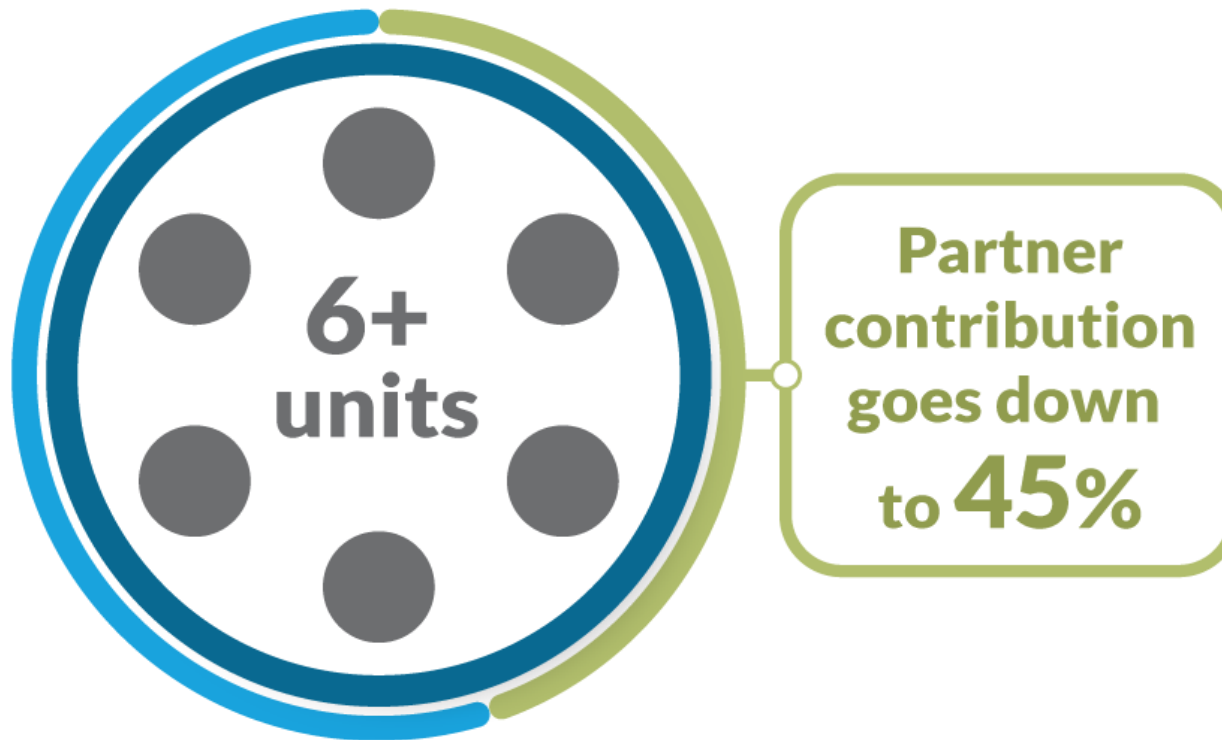


Mitacs Accelerate



Mitacs Accelerate

Better leveraging is available for larger projects, enabling your research budget to go even further



Example project with Museums

Example 1 – Accelerate Project

Developing Foodways and Gardening Strategies for the L.M. Montgomery Museum & Literary Centre

This project will complete an urgently needed feasibility study linking researchers and graduate students from the University of Guelph with the Lucy Maud Montgomery Museum and Literary Centre (LMMMLC) in Norval. Together, this team of researchers and community partners will define current best practices in museum design to create a plan for the LMMMLC to use in developing an innovative educational facility in Ontario that will commemorate both Lucy Maud Montgomery's legacy and celebrate the history of women in Canada. This feasibility study is the vital first step in the LMMMLC's vision to develop the Norval site into a globally-recognised museum.

Intern: Kesia Kvill

Faculty Supervisor: Linda Mahood

Province: Ontario

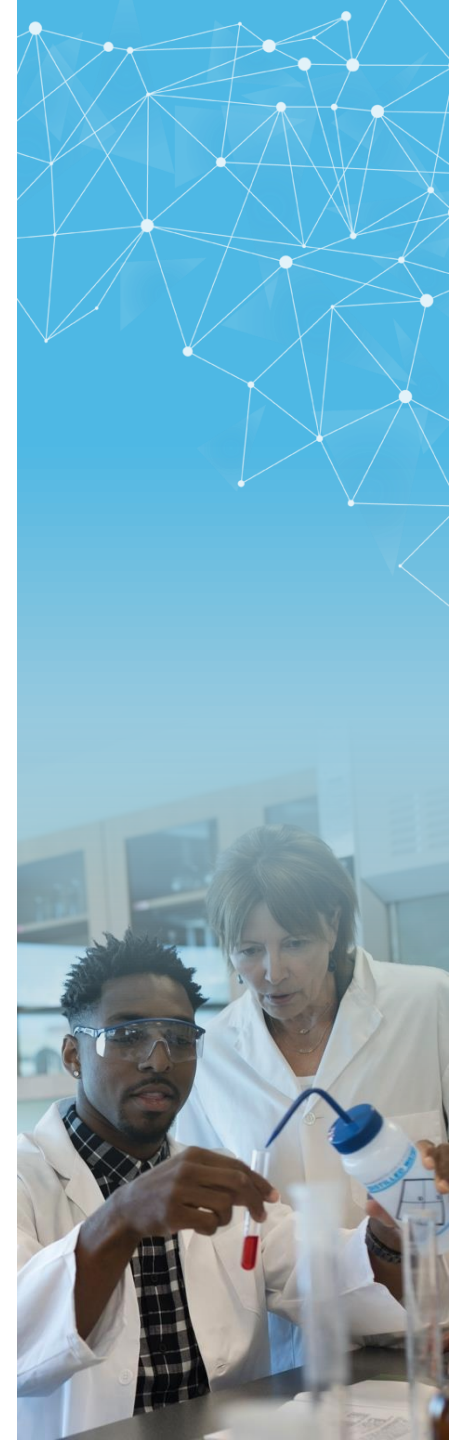
University: [University of Guelph](#)

Partner: [Heritage Foundation of Halton Hills](#)

Partner University:

Discipline: [History](#)

Program: [Accelerate](#)



Accelerate - Industrial Postdoctoral Fellowship (iPDF)

Mitacs

Mitacs Industrial Postdoc

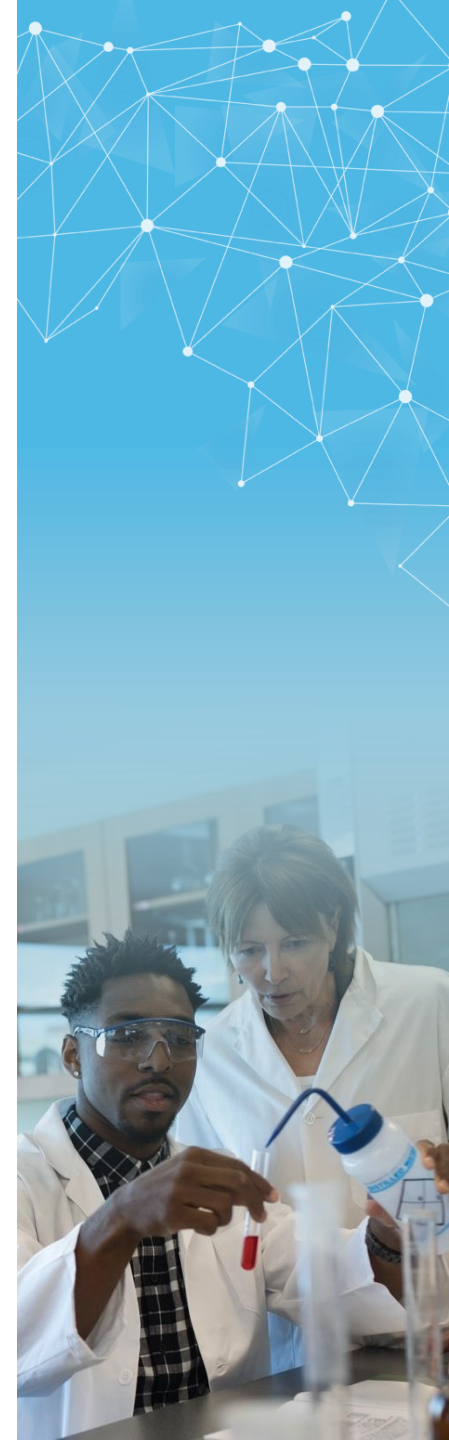
Postdoctoral researchers can secure longer-term funding for their research



1, 2, or 3 year collaborations

- Opportunity to build longer-term collaboration
 - Connect with a potential employer
 - Build industry-ready skills

Open to all academic disciplines



Mitacs Industrial postdoc

Salary/stipend for
postdoctoral fellow

\$45,000

per year for 1-3 years

Additional research expenses

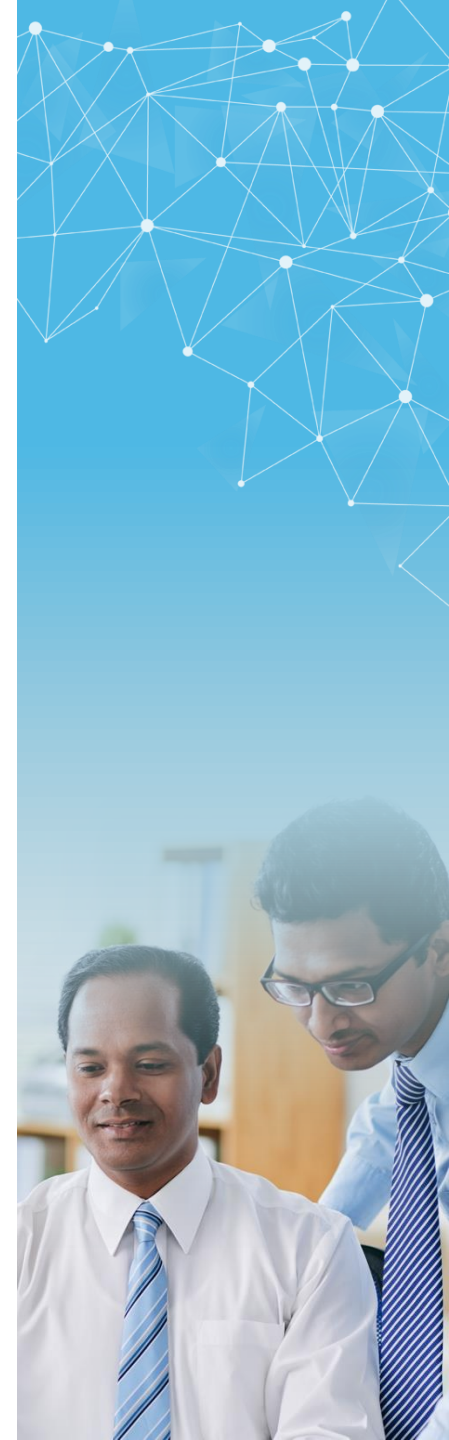
\$15,000

per year for 1-3 years

Annual Contributions

\$30,000

from partner



Business Strategy Internship

Mitacs

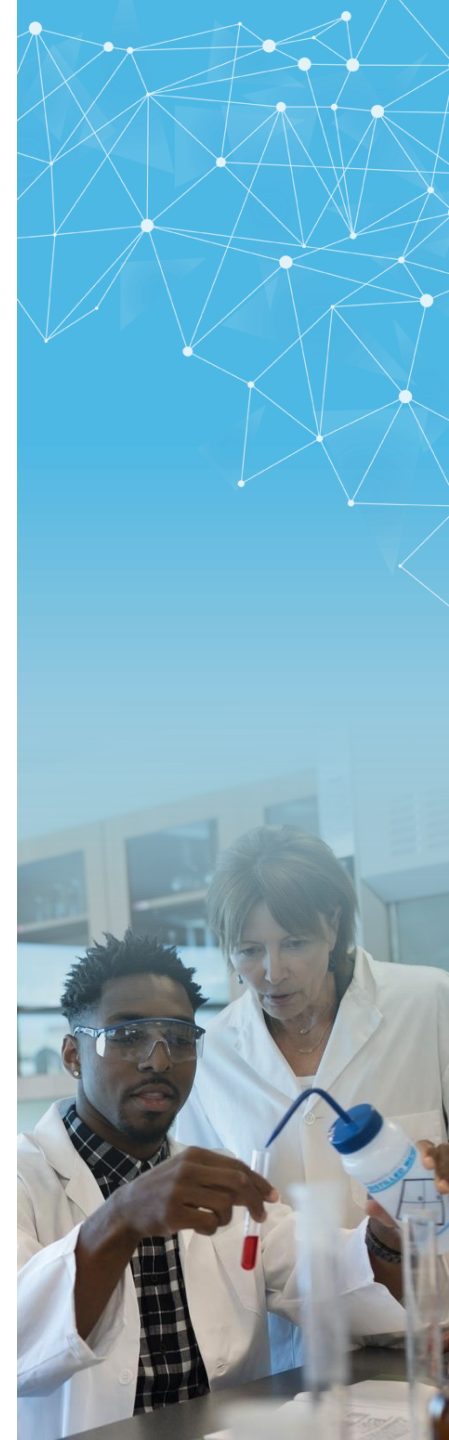
Mitacs BSI

Structured to assist organizations' innovation activities, help them improve their products, processes, or services.

\$10k or 15k
research grant

4 or 6 month
innovation project

Academic supervisor or appropriate research staff member appointed by the institution to oversee the work



OECD definitions

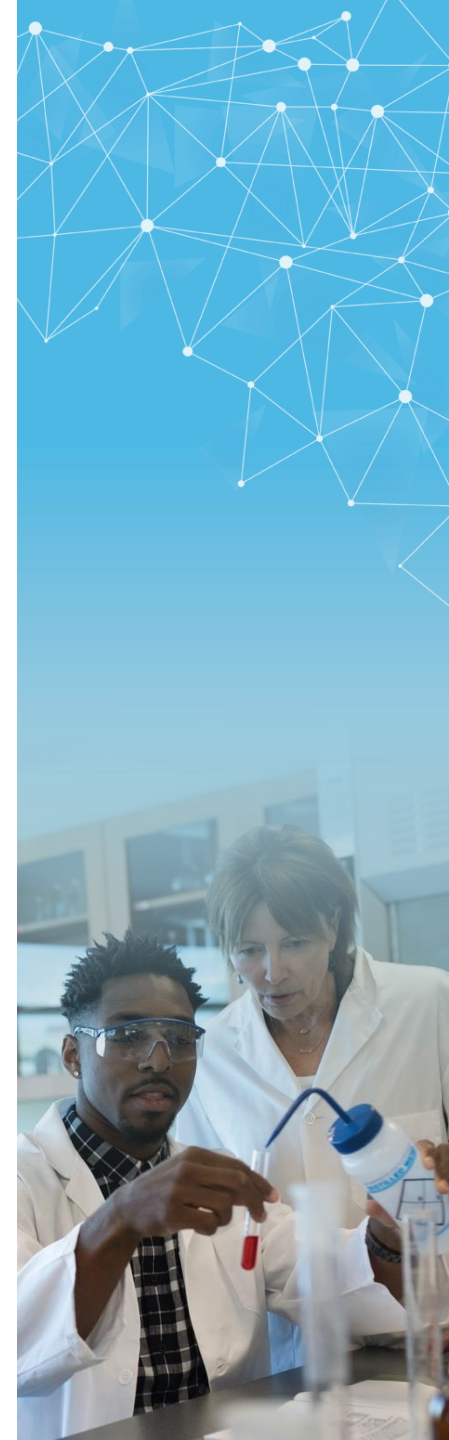
Four types of Innovation:

(1) Product innovation: A good or service that is new or significantly improved. This includes significant improvements in technical specifications, components and materials, software in the product, user friendliness or other functional characteristics.

(2) Process innovation: A new or significantly improved production or delivery method. This includes significant changes in techniques, equipment and/or software.

(3) Marketing innovation: A new marketing method involving significant changes in product design or packaging, product placement, product promotion or pricing.

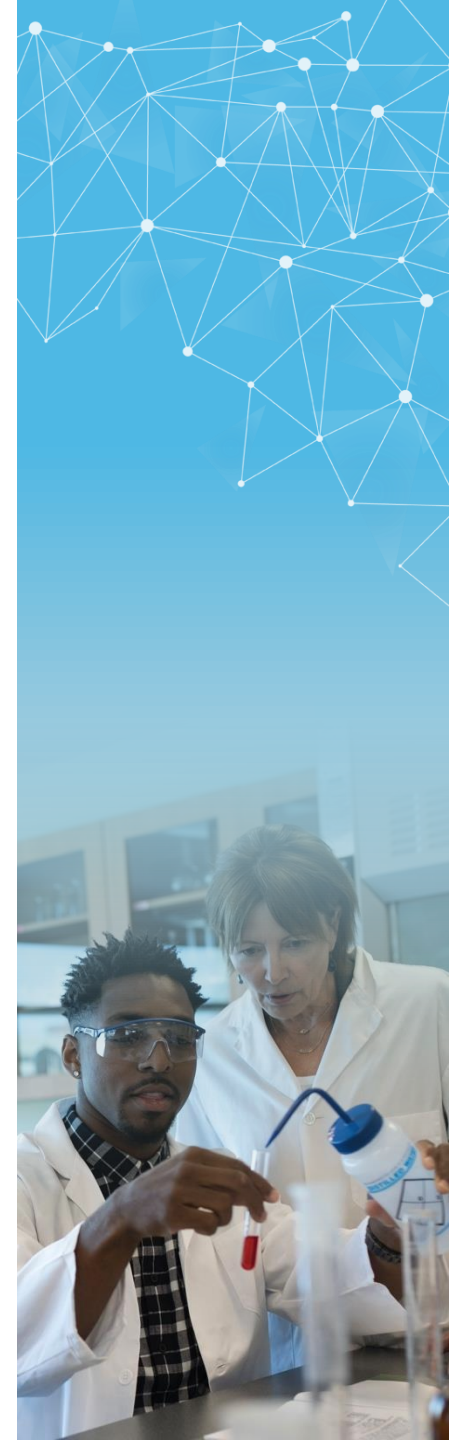
(4) Organisational innovation: A new organisational method in business practices, workplace organisation or external relations.



Example project with Museums

Example 2 – Business Strategy Internship Project

- *Museum XX* is looking to re-diversify its revenue mix through the recovery phase post-pandemic, to operate sustainably. The internship opportunity will develop a sponsorship business plan, and intersect donor development and major gifts into the strategy. The intern will be interacting with a board committee, the CEO, the agency, and corporate partners of *Museum XX*.
 - Academic partner – Business School in BC
 - Industry partner – Museum XX (Not-for-profit)



Expanded offerings



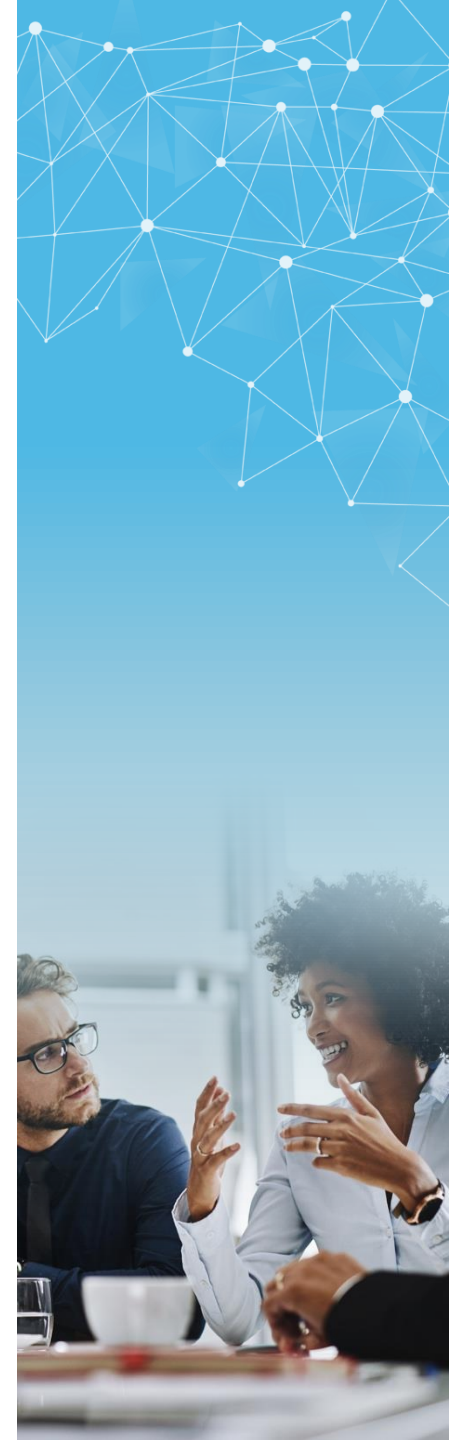
Expanded partner eligibility for 2021

Municipalities/Regional Governments

- From economic development to sustainability, smart cities, cybersecurity, public health, infrastructure and more.
- Mitacs can work with municipalities of any size

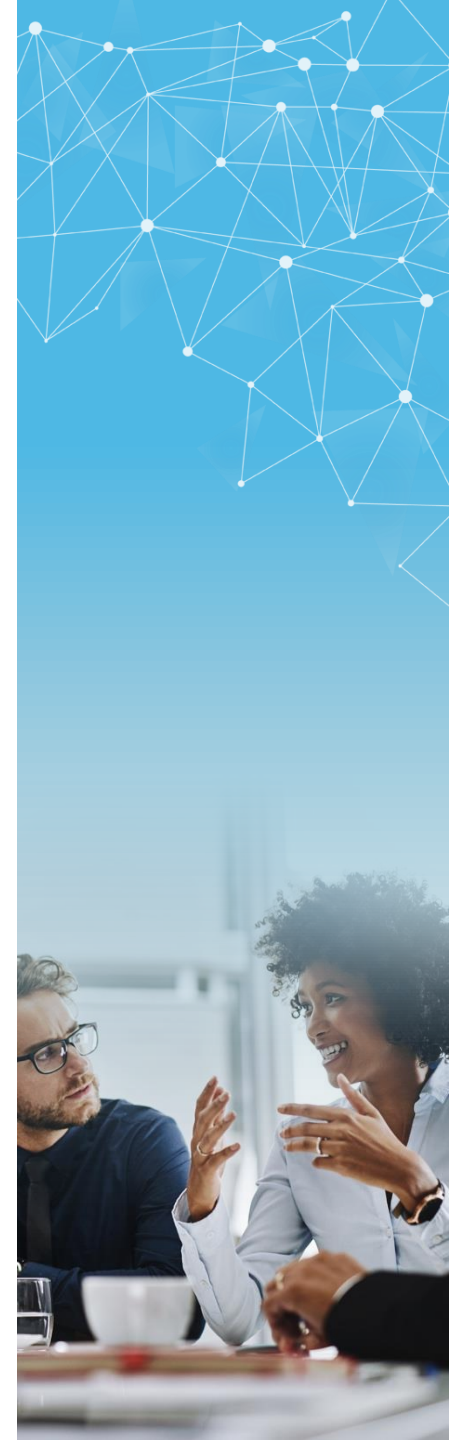
Hospitals

- Mitacs can work with traditional Hospitals, or whatever a community considers a “Hospital” to be.
- Interns eligible is Hospital is not their typical work environment



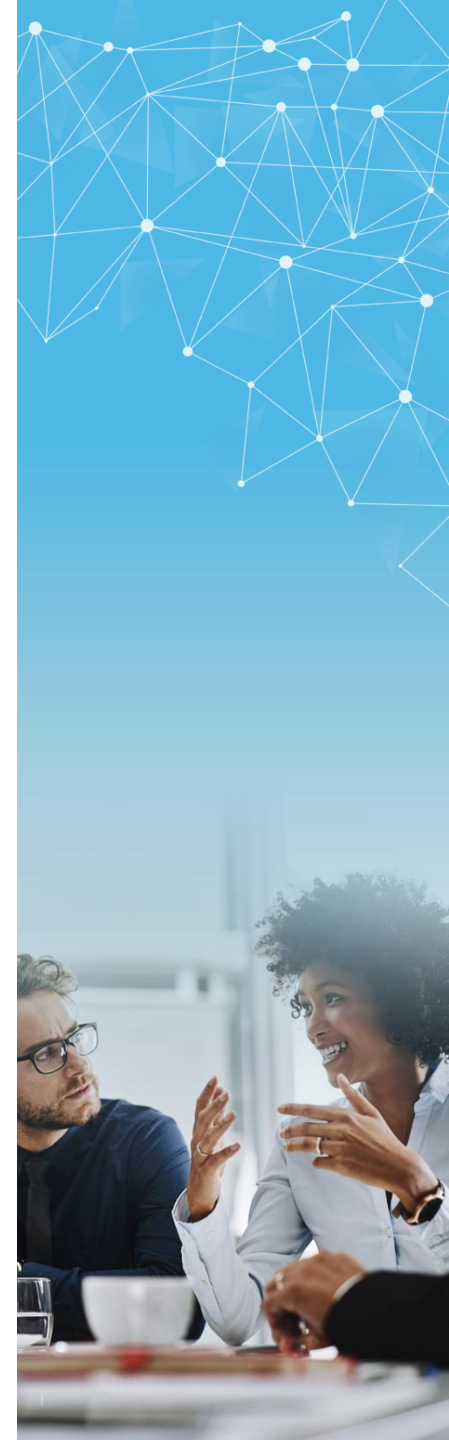
Indigenous Pathways

- Indigenous projects
 - The intern self-identifies as being Indigenous
 - **OR** the partner organization is 50% owned or greater by an individual that self-identifies as Indigenous
- Enhanced cost-sharing ratio for all internship units
 - Accelerate
 - \$3750 from partner / \$11250 from Mitacs
 - Business Strategy Internship
 - \$2500 from partner / \$7500 from Mitacs
 - \$3750 from partner / \$11250 from Mitacs



SME Discount

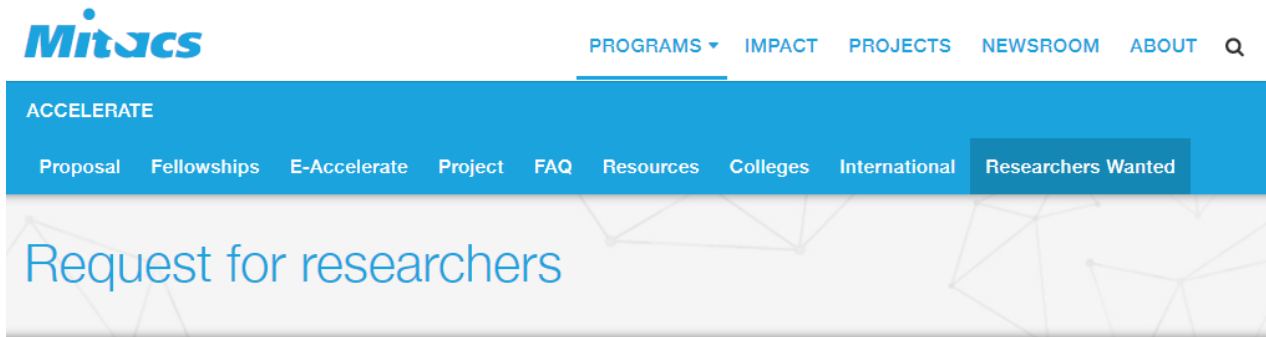
- For a limited time, Mitacs is increasing funding for small and medium-size businesses (SMEs).
- Not-for-profit organizations also eligible
 - Enhanced cost-sharing ratio for 1st internship unit
 - Accelerate
 - \$3750 from partner / \$11250 from Mitacs
 - Business Strategy Internship
 - \$2500 from partner / \$7500 from Mitacs
 - \$3750 from partner / \$11250 from Mitacs



Request for researchers



Companies seeking interns – national database



Mitacs works with industry and not-for-profit partners who need academic research expertise to help solve their toughest challenges. These partners come from all industry sectors and are located across Canada and abroad.

We are seeking college, graduate students, and postdocs for the collaborative projects with industry or not-for-profit partners below. Please use the filters below to search the available projects. If you find one or more projects of interest, please discuss the opportunity with your academic supervisor; if they are supportive, please apply using the link at the end of the project description.

If we determine there is a match, we will connect you and your academic supervisor with the partner to discuss and develop the Mitacs research proposal.

If you are a company or not-for-profit needing academic expertise for an upcoming project, please complete [this form](#).

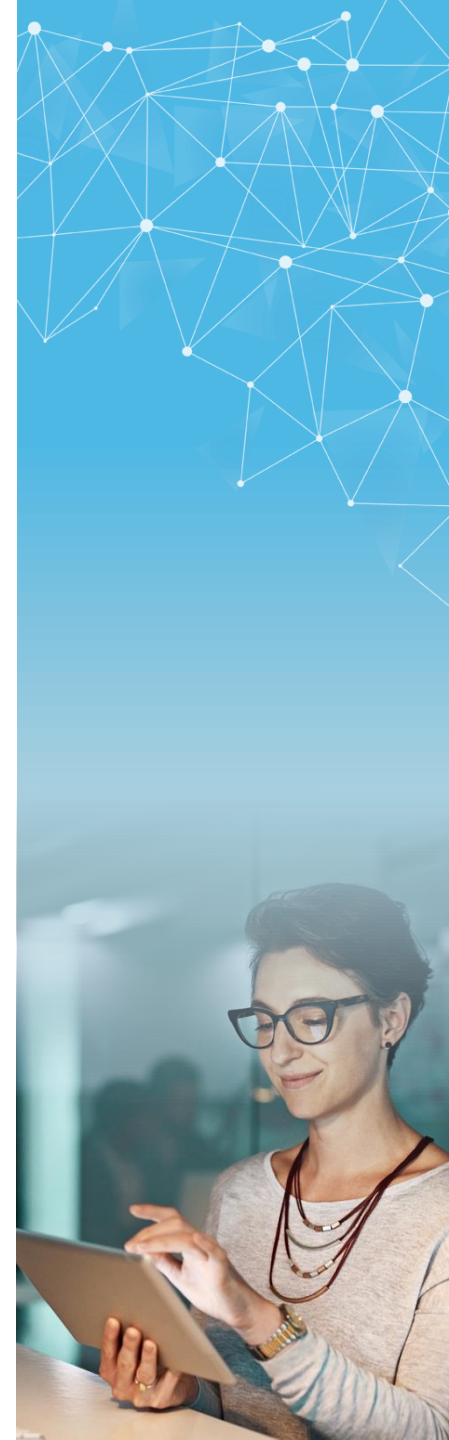
If you are a faculty member at an academic institution in Canada and are interested in one of the projects, please contact a member of our [business development team](#).

Keyword search	Country	Province	City
<input type="text"/>	<input type="text" value="- Any -"/>	<input type="text" value="- Any -"/>	<input type="text"/>

Desired discipline(s)

- ☐ Engineering
- ☐ -Aerospace studies
- ☐ -Engineering - biomedical
- ☐ -Engineering - chemical / biological
- ☐ -Engineering - civil
- ☐ -Engineering - computer / electrical
- ☐ -Engineering - mechanical
- ☐ -Engineering - petrochemical

www.mitacs.ca/en/programs/accelerate/researchers-wanted



Thanks to our funding partners

Canada 

Alberta 

 BRITISH
COLUMBIA

 Research
Manitoba

New  Nouveau
Brunswick

Newfoundland
Labrador 

NOVA SCOTIA 

Ontario 

innoVationpei

Québec 

Saskatchewan 

Yukon 

QUESTIONS?

Mitacs

Thank you for your interest



mkennefick@mitacs.ca



(250) 859-5910



[@MitacsCanada](https://twitter.com/MitacsCanada)



linkedin.com/company/mitacs/

Mitacs